



IWEISS

## RIGGING EQUIPMENT Head Block



The IWEISS Head Block Stationary sheave or block assembly mounts directly above the counterweight arbor or pin rail. Head block allows lift lines to change direction. In wire rope systems, head block is also grooved to allow purchase line to change direction by 180 degrees.

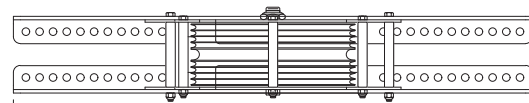
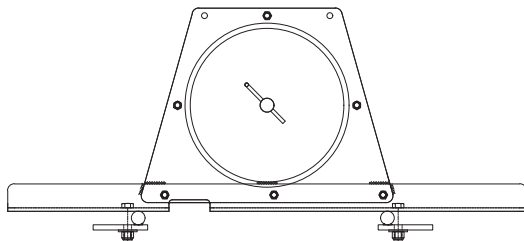
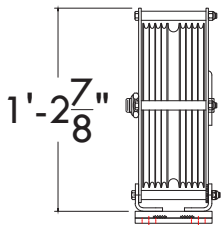
### SPECIFICATION

- 12" Diameter ASTM grey iron or nylon sheaves
- Cast sheave color is yellow, nylon is grey
- 1" Taper roller bearings
- 10 Gauge steel side plates, bolted and welded to base angles
- Multi hole base angle for various mounting options
- Upright blocks have notch in bottom base angles to accommodate purchase line
- Equal pitch grooved for multi 1/4" lines and one 3/4" line
- Meets ANSI E1.4-1 standards

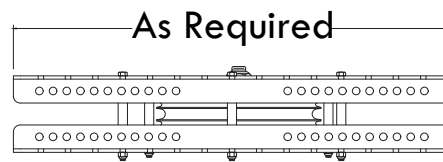
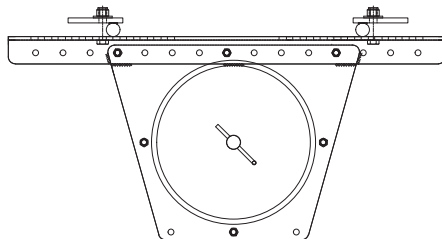
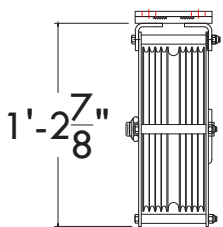


W<sub>e</sub>iss H<sub>e</sub>ad B<sub>l</sub>ock - X<sub>L</sub>ift Lines X<sub>S</sub>heave X<sub>U</sub>nder/Up

PART#	LINES	SHEAVE	CAPACITY	SELF WEIGHT
WHB-06C	6	Cast	3,000 lbs	72
WHB-06N	6	Cast	3,000 lbs	41
WHB-08C	8	Nylon	3,000 lbs	80
WHB-08N	8	Nylon	3,000 lbs	42



As Required



As Required