



# IWEISS

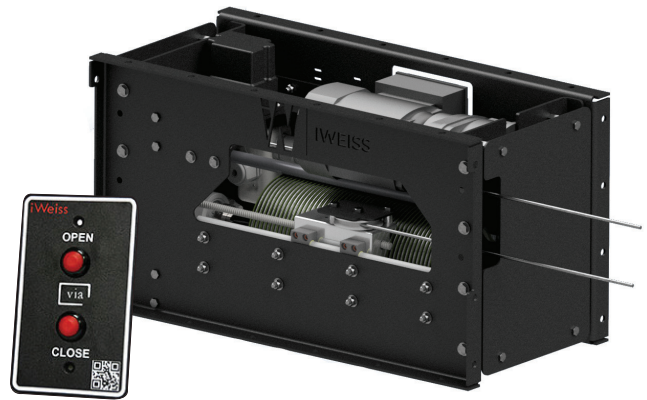
## RIGGING EQUIPMENT ViaTraveler



The ViaTraveler has a zero-fleet design for moving horizontal curtain loads up to 60ft. This unit has been specifically manufactured to work in conjunction with all standard stage curtain tracks. The zero-fleet capability permits close placement of the unit to pulleys and eliminates the concern of fleet angles. The closed loop design allows for bi-direction motion of any horizontal movement. In addition, ViaTraveler can be installed in any orientation.

### TECHNICAL DATA

<b>Part #</b>	VT
<b>Materials</b>	<ul style="list-style-type: none"> <li>• 3-Phase Gearmotor</li> <li>• Helically grooved nylon drum</li> <li>• Zero-fleet moving sheaves</li> <li>• Formed steel housing</li> <li>• 1-Phase option available</li> </ul>
<b>Dimensions</b>	11.5" x 24" x 13"
<b>Weight</b>	75lbs
<b>Features</b>	<ul style="list-style-type: none"> <li>• 4-Cam rotary limit switch</li> <li>• Standard face plate pushbutton</li> <li>• Optional encoder</li> <li>• Variable speed</li> </ul>



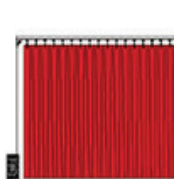
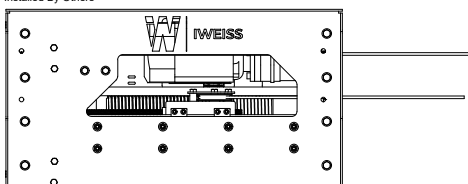
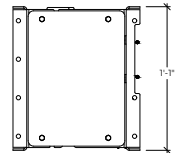
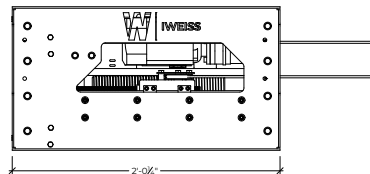
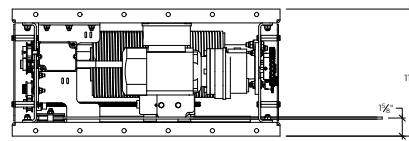
Motor Control Cabinet  
12"x10"x6"  
Factory Wired Control/Power Cable to Machine  
Mounted within 5ft of machine  
Supplied by IWEISS  
Installed By Others

Service:  
120VAC, 1-Phase, 60Hz, 10Amp  
2W+Ground  
By Others

Control:  
3W, 18ga. (Com. Open, Close)  
By Others

ViaTraveler (Curtain Machine)  
24"x11.5"x13"  
Supplied by IWEISS  
Installed By Others

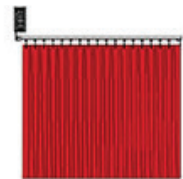
Push Button Controller  
Single Gang Face Plate  
Mount in Single Gang, By Others  
Control Plate By IWEISS  
Backbox By Others



Floor/Wall  
Mounting



Track Mounting



Top Mounting